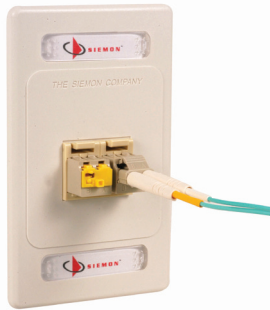


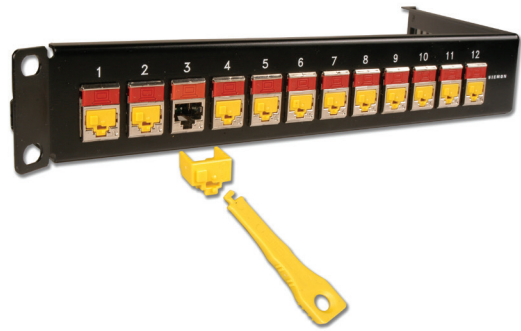
LockIT™ Secure Connectivity System

Regional Availability - Global

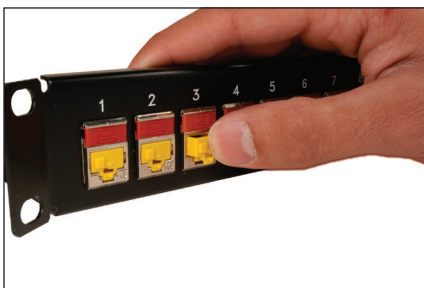
The RJ45 Outlet Lock and LC Adapter Lock fit securely into any standards compliant RJ45 outlet or LC fiber adapter to block access to the port. It locks flush within the outlet or adapter opening to provide a clean, attractive appearance without obstructing adjacent ports or protruding beyond the outlet face. The outlet or adapter lock may be installed without the LockIT Key and safely removed only by using the LockIT Key. All LockIT RJ45 Outlet/LC Adapter components are brightly colored in yellow to easily identify secured connectivity.



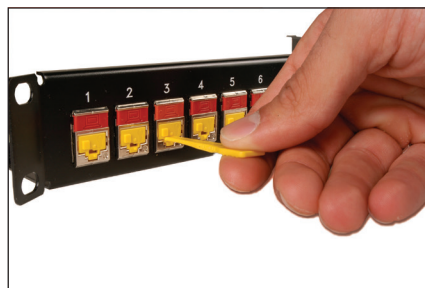
LC Adapter Lock



RJ45 Outlet Lock



The outlet/adapter lock simply snaps into empty ports with no key required



Insert the universal key into the outlet/adapter lock and rotate to unlock



The lock may now be removed and is retained by the key to avoid dropping

LockIT™ LC Adapter Lock

LL-LC-05

LockIT LC Adapter Lock, bag of 10, includes 1 LockIT Adapter Key

LockIT™ RJ45 Outlet Lock

LL-05

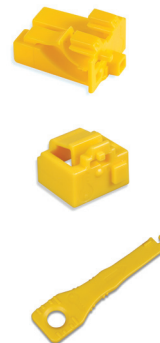
LockIT RJ45 Outlet Lock, bag of 10, includes 1 LockIT Outlet Key

LockIT™ Outlet/Adapter Key

The LockIT Outlet/Adapter Key is used to unlock the LC adapter and RJ45 Outlet locks.

LKEY-05

LockIT Outlet/Adapter Key, bag of 10



Because we continuously improve our products, Siemon reserves the right to change specifications and availability without prior notice.

North America
P: (1) 860 945 4200

Asia Pacific
P: (61) 2 8977 7500

Latin America
P: (571) 657 1950/51/52

Europe
P: (44) 0 1932 571771

China
P: (86) 215385 0303

India, Middle East & Africa
P: (971) 4 3689743

Siemon Interconnect Solutions
P: (1) 860 945 4213
www.siemon.com/SIS

WWW.SIEMON.COM

SS_WorkArea_LockITSecureConnectivity_RevH_0421

