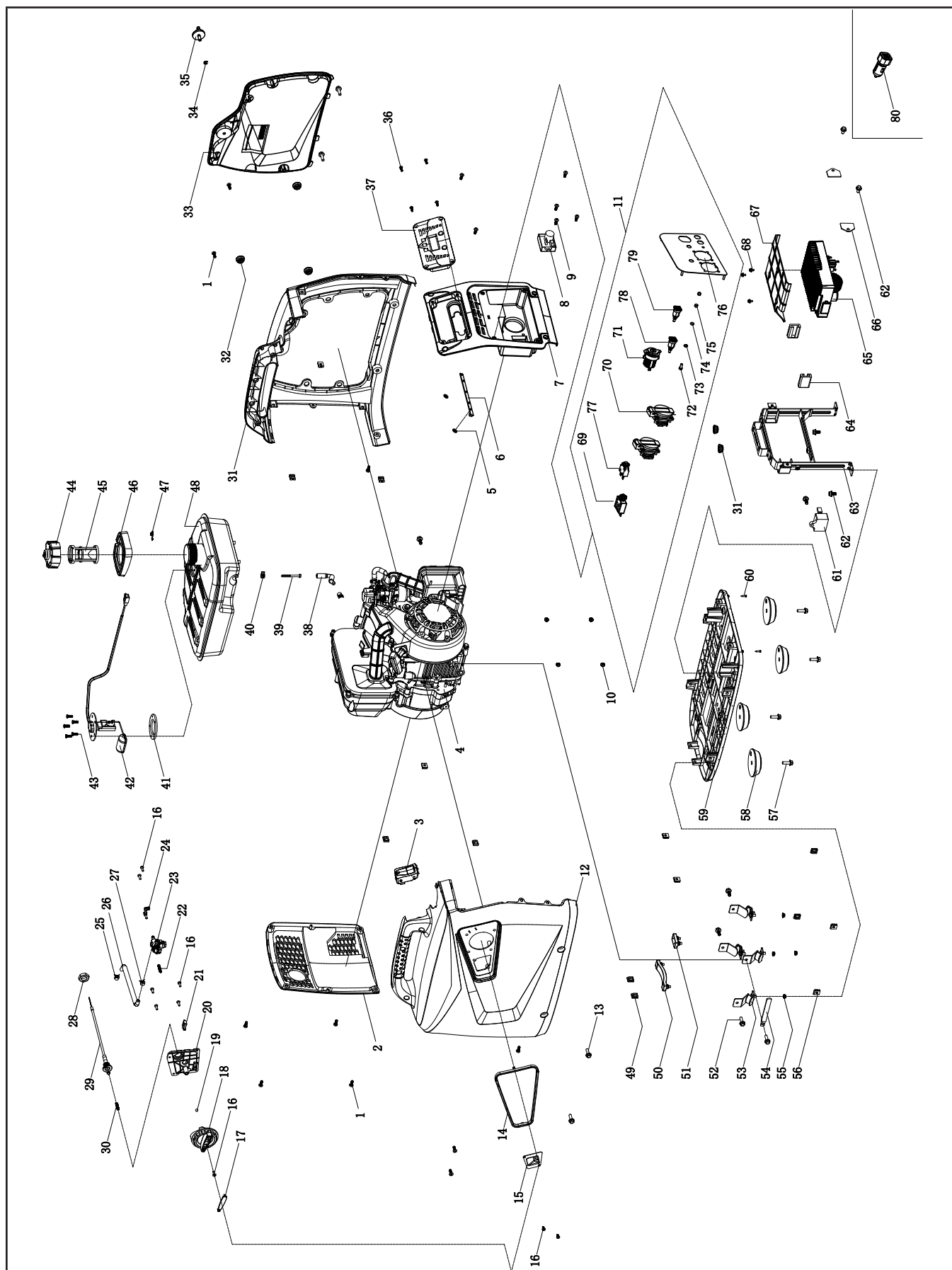


### 82001i-EU Parts Diagram



EN

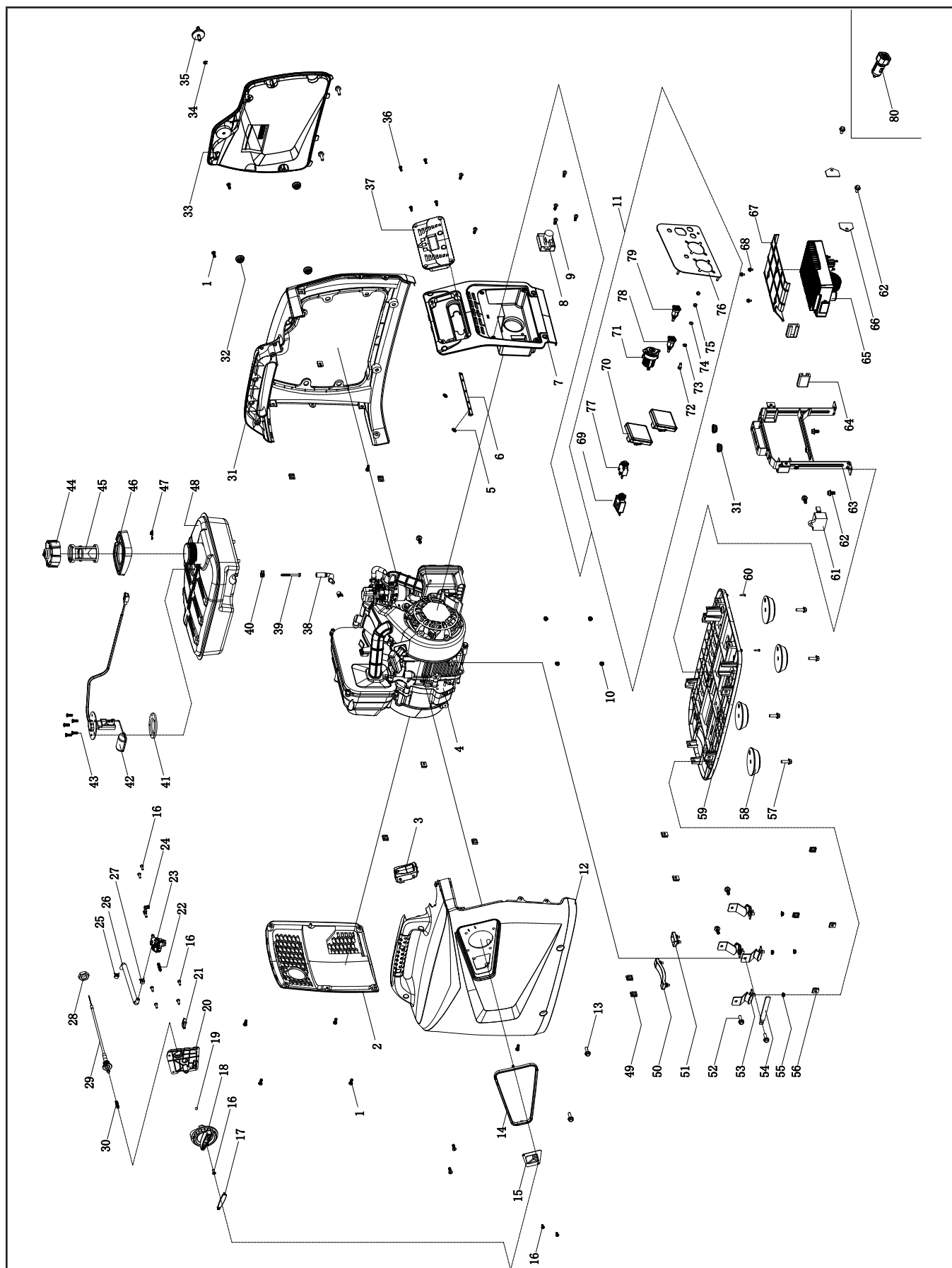
## 82001i-EU Parts List

| #  | Part Number     | Description                             | Qty. |
|----|-----------------|---|------|
| 1  | 1.818.0514.3    | Screw M5 x 14, Green                    | 14   |
| 2  | 62.200200.00    | Cover, Left, black                      | 1    |
| 3  | 62.214000.00    | Indicator Light Assembly, Fuel Tank     | 1    |
| 4  | 62.403          | Engine, 80 cc                           | 1    |
| 5  | 2.03.061        | Circlip                                 | 2    |
| 6  | 62.214000.01    | Indicator Light Assembly, Control Panel | 1    |
| 7  | 62.200300.00    | Cover, Right, black                     | 1    |
| 8  | 88.126000.00    | Ignition Assembly                       | 1    |
| 9  | 1.818.0414.3    | Screw M4 x 14                           | 2    |
| 10 | 1.6177.1.04.1   | Lock Nut M4, Flange, Green              | 12   |
| 11 | 82001i-EU.21    | Control Panel Assembly                  | 1    |
| 12 | 62.200101.00.48 | Front Cover, Yellow                     | 1    |
| 13 | 1.5789.0615.3   | Flange Bolt M6 x 15                     | 4    |
| 14 | 62.200106.00    | Protection Strip                        | 1    |
| 15 | 62.061200.00    | Guide Plate, Rope                       | 1    |
| 16 | 1.823.0412.3    | Screw M4 x 12                           | 9    |
| 17 | 62.139002.00    | Cover, Rotary Knob                      | 1    |
| 18 | 62.139001.00    | Rotary Knob                             | 1    |
| 19 | 62.139008.00    | Ball Bearing, Rotary Knob               | 1    |
| 20 | 62.139004.00    | Fixed Plate                             | 1    |
| 21 | 5.1050.008      | Microswitch                             | 1    |
| 22 | 62.139007.00    | Spring, Steel Ball                      | 1    |
| 23 | 62.070400.00    | Fuel Valve                              | 1    |
| 24 | 62.139006.00    | Pressure Plate                          | 1    |
| 25 | 2.06.016        | Clamp, Ø8.7 x b8                        | 2    |
| 26 | 62.070011.00    | Pipe, Fuel Valve to Carburator          | 1    |
| 27 | 2.06.007        | Clamp, Ø8 x b6                          | 1    |
| 28 | 2.02.036        | Thin Hexnut M16 x 1.5                   | 1    |
| 29 | 62.130200.00    | Pull Choke Assembly                     | 1    |
| 30 | 62.130201.00    | Spring, Pull Choke                      | 1    |
| 31 | 62.200401.00.48 | Supporter, Rear Cover, Yellow           | 1    |
| 32 | 81.200102.00    | Rotundity Jacket                        | 3    |
| 33 | 62.200402.00.48 | Protector, Rear Cover, Yellow           | 1    |
| 34 | 1.896.05        | Split Washer Ø5                         | 1    |
| 35 | 62.200410.00    | Rotary Knob, Protector, Rear Cover      | 1    |

| #  | Part Number   | Description                       | Qty. |
|----|---------------|-----------------------------------|------|
| 36 | 1.819.0414.3  | Sunk Screw M4 x 14                | 12   |
| 37 | 62.210017.00  | Multifunction Display             | 1    |
| 38 | 88.070011.01  | Pipe, Fuel Tank to Valve          | 1    |
| 39 | 111.070300.01 | Fuel Filter, Wire Mesh            | 1    |
| 40 | 2.06.018      | Clamp, Ø10.5 x b8                 | 1    |
| 41 | 122.070036.00 | Seal Ring                         | 1    |
| 42 | 62.070035.00  | Fuel Level Sensor                 | 1    |
| 43 | 1.819.0516.2  | Sunk Screw M5 x 16                | 5    |
| 44 | 62.070100.00  | Fuel Tank Cap                     | 1    |
| 45 | 62.070300.00  | Fuel Filter                       | 1    |
| 46 | 62.200502.00  | Spillway, Fuel Tank               | 1    |
| 47 | 82.080009.00  | Mustache clip                     | 1    |
| 48 | 62.071000.00  | Fuel Tank, 4.2L, Black            | 1    |
| 49 | 2.02.010      | Cage Nut M5                       | 10   |
| 50 | 81.200603.00  | Mount, End Cover                  | 1    |
| 51 | 81.200602.00  | Mounting Rubber, End Cover        | 1    |
| 52 | 1.5789.0615   | Flange Bolt M6 x 15               | 5    |
| 53 | 81.200605.00  | Motor Mount                       | 4    |
| 54 | 2.05.050      | Clamp, Wire, 100                  | 1    |
| 55 | 1.6177.1.06.3 | Lock Nut M6, Flange, Green        | 4    |
| 56 | 2.02.013      | Cage Nut M6                       | 4    |
| 57 | 1.5789.0620   | Flange Bolt M6 x 20               | 4    |
| 58 | 62.200604.00  | Mounting Rubber, Base Setting     | 4    |
| 59 | 62.200601.00  | Base Setting Component            | 1    |
| 60 | 1.845.2913    | Tapping Screw ST2.9 x 13          | 2    |
| 61 | 5.1800.003    | Rectifier                         | 1    |
| 62 | 1.5789.0612   | Flange Bolt M6 x 12               | 5    |
| 63 | 62.070009.00  | Supportor, Fuel Tank              | 1    |
| 64 | 81.220001.00  | Protector, Control Unit           | 2    |
| 65 | 62.221000.03  | Control Unit, 1600W /230V/50HZ    | 1    |
| 66 | 81.220003.00  | Pressure Plate, Control Unit      | 2    |
| 67 | 62.220006.00  | Air Shroud, Control Unit          | 1    |
| 68 | 1.9074.1.0408 | Screw M4x8                        | 3    |
| 69 | 5.1200.308    | 8Amp Circuit Breaker, Push Button | 1    |
| 70 | 5.1120.013.1  | Receptacle                        | 2    |

| #  | Part Number    | Description                                | Qty. |
|----|----------------|--|------|
| 71 | 5.1110.005     | Receptacle, DC12V                          | 1    |
| 72 | 1.5783.0516.3  | Bolt M5 x 16, Green                        | 1    |
| 73 | 1.862.05       | Lock Washer Ø5,<br>Toothed                 | 2    |
| 74 | 1.97.1.05.3    | Washer, Ø5, Green                          | 1    |
| 75 | 1.6170.05.3    | Nut M5, Green                              | 2    |
| 76 | 62.01.2.2      | Control Panel                              | 1    |
| 77 | 5.1210.920     | 20Amp Circuit Breaker,<br>Push Button, CSA | 1    |
| 78 | 83.210001.00.1 | Connect Port, Black                        | 1    |
| 79 | 83.210001.00.3 | Connect Port, Red                          | 1    |
| 80 | 1.16674.0510   | Flange Bolt M5 x 10                        | 1    |
| 81 | 9.1700.008     | Plug, USB 5V/2.4A                          | 1    |

### 82001i-UK Parts Diagram



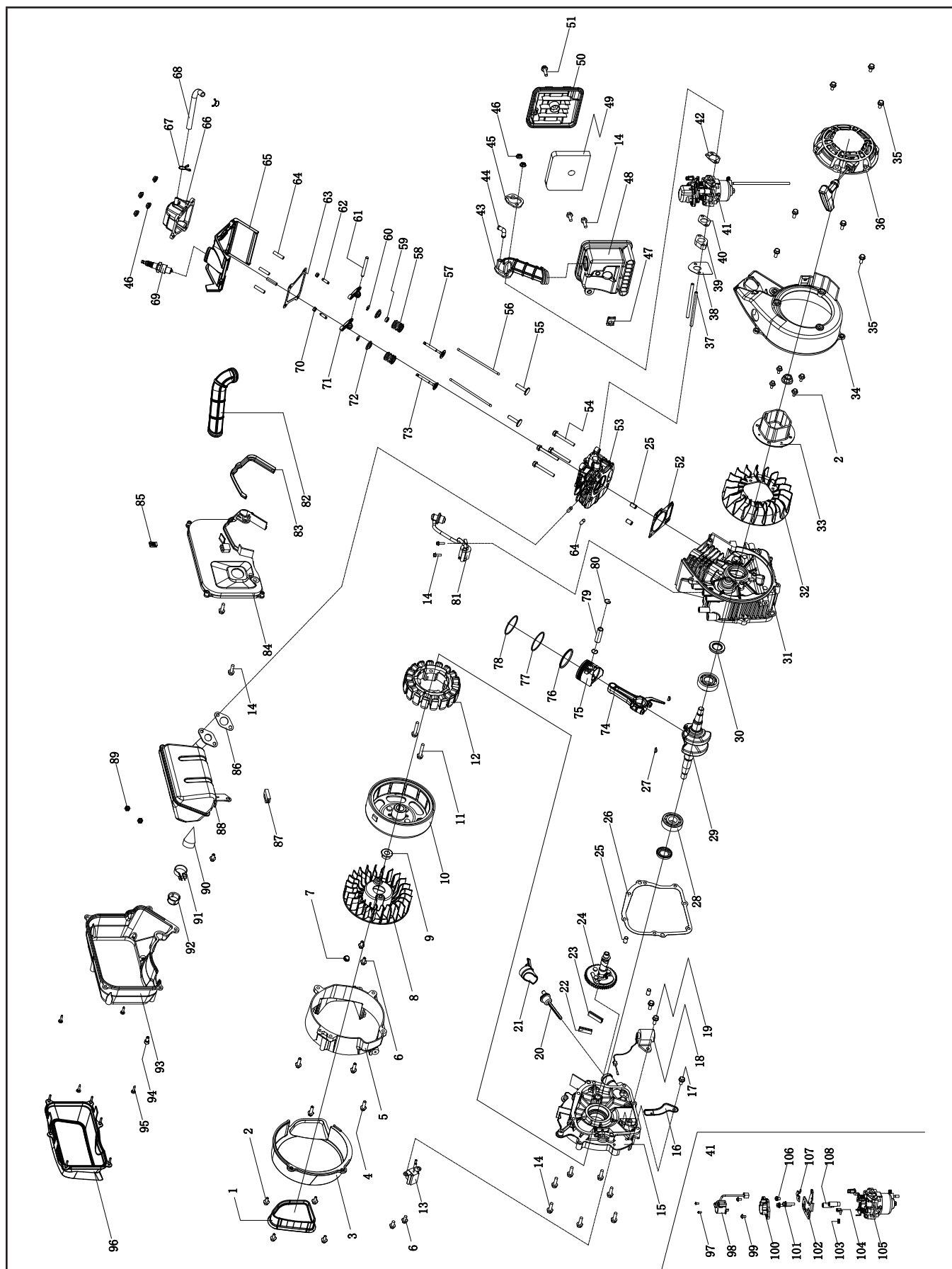
## 82001i-UK Parts List

| #  | Part Number     | Description                             | Qty. |
|----|-----------------|---|------|
| 1  | 1.818.0514.3    | Screw M5 x 14, Green                    | 14   |
| 2  | 62.200200.00    | Cover, Left, black                      | 1    |
| 3  | 62.214000.00    | Indicator Light Assembly, Fuel Tank     | 1    |
| 4  | 62.403          | Engine, 80 cc                           | 1    |
| 5  | 2.03.061        | Circlip                                 | 2    |
| 6  | 62.214000.01    | Indicator Light Assembly, Control Panel | 1    |
| 7  | 62.200300.00    | Cover, Right, black                     | 1    |
| 8  | 88.126000.00    | Ignition Assembly                       | 1    |
| 9  | 1.818.0414.3    | Screw M4 x 14                           | 2    |
| 10 | 1.6177.1.04.1   | Lock Nut M4, Flange, Green              | 12   |
| 11 | 82001i-UK.21    | Control Panel Assembly                  | 1    |
| 12 | 62.200101.00.48 | Front Cover, Yellow                     | 1    |
| 13 | 1.5789.0615.3   | Flange Bolt M6 x 15                     | 4    |
| 14 | 62.200106.00    | Protection Strip                        | 1    |
| 15 | 62.061200.00    | Guide Plate, Rope                       | 1    |
| 16 | 1.823.0412.3    | Screw M4 x 12                           | 9    |
| 17 | 62.139002.00    | Cover, Rotary Knob                      | 1    |
| 18 | 62.139001.00    | Rotary Knob                             | 1    |
| 19 | 62.139008.00    | Ball Bearing, Rotary Knob               | 1    |
| 20 | 62.139004.00    | Fixed Plate                             | 1    |
| 21 | 5.1050.008      | Microswitch                             | 1    |
| 22 | 62.139007.00    | Spring, Steel Ball                      | 1    |
| 23 | 62.070400.00    | Fuel Valve                              | 1    |
| 24 | 62.139006.00    | Pressure Plate                          | 1    |
| 25 | 2.06.016        | Clamp, Ø8.7 x b8                        | 2    |
| 26 | 62.070011.00    | Pipe, Fuel Valve to Carburetor          | 1    |
| 27 | 2.06.007        | Clamp, Ø8 x b6                          | 1    |
| 28 | 2.02.036        | Thin Hexnut M16 x 1.5                   | 1    |
| 29 | 62.130200.00    | Pull Choke Assembly                     | 1    |
| 30 | 62.130201.00    | Spring, Pull Choke                      | 1    |
| 31 | 62.200401.00.48 | Supporter, Rear Cover, Yellow           | 1    |
| 32 | 81.200102.00    | Rotundity Jacket                        | 3    |
| 33 | 62.200402.00.48 | Protector, Rear Cover, Yellow           | 1    |
| 34 | 1.896.05        | Split Washer Ø5                         | 1    |
| 35 | 62.200410.00    | Rotary Knob, Protector, Rear Cover      | 1    |

| #  | Part Number   | Description                       | Qty. |
|----|---------------|-----------------------------------|------|
| 36 | 1.819.0414.3  | Sunk Screw M4 x 14                | 4    |
| 37 | 62.210017.00  | Multifunction Display             | 1    |
| 38 | 88.070011.01  | Pipe, Fuel Tank to Valve          | 1    |
| 39 | 111.070300.01 | Fuel Filter, Wire Mesh            | 1    |
| 40 | 2.06.018      | Clamp, Ø10.5 x b8                 | 1    |
| 41 | 122.070036.00 | Seal Ring                         | 1    |
| 42 | 62.070035.00  | Fuel Level Sensor                 | 1    |
| 43 | 1.819.0516.2  | Sunk Screw M5 x 16                | 5    |
| 44 | 62.070100.00  | Fuel Tank Cap                     | 1    |
| 45 | 62.070300.00  | Fuel Filter                       | 1    |
| 46 | 62.200502.00  | Spillway, Fuel Tank               | 1    |
| 47 | 82.080009.00  | Mustache clip                     | 1    |
| 48 | 62.071000.00  | Fuel Tank, 4.2L, Black            | 1    |
| 49 | 2.02.010      | Cage Nut M5                       | 10   |
| 50 | 81.200603.00  | Mount, End Cover                  | 1    |
| 51 | 81.200602.00  | Mounting Rubber, End Cover        | 1    |
| 52 | 1.5789.0615   | Flange Bolt M6 x 15               | 5    |
| 53 | 81.200605.00  | Motor Mount                       | 4    |
| 54 | 2.05.050      | Clamp, Wire, 100                  | 1    |
| 55 | 1.6177.1.06.3 | Lock Nut M6, Flange, Green        | 4    |
| 56 | 2.02.013      | Cage Nut M6                       | 4    |
| 57 | 1.5789.0620   | Flange Bolt M6 x 20               | 4    |
| 58 | 62.200604.00  | Mounting Rubber, Base Setting     | 4    |
| 59 | 62.200601.00  | Base Setting Component            | 1    |
| 60 | 1.845.2913    | Tapping Screw ST2.9 x 13          | 2    |
| 61 | 5.1800.003    | Rectifier                         | 1    |
| 62 | 1.5789.0612   | Flange Bolt M6 x 12               | 5    |
| 63 | 62.070009.00  | Supportor, Fuel Tank              | 1    |
| 64 | 81.220001.00  | Protector, Control Unit           | 2    |
| 65 | 62.221000.02  | Control Unit, 1600W / 240V / 50HZ | 1    |
| 66 | 81.220003.00  | Pressure Plate, Control Unit      | 2    |
| 67 | 62.220006.00  | Air Shroud, Control Unit          | 1    |
| 68 | 1.9074.1.0408 | Screw M4x8                        | 3    |
| 69 | 5.1200.308    | 8Amp Circuit Breaker, Push Button | 1    |
| 70 | 5.1120.011.1  | Receptacle                        | 2    |

| #  | Part Number    | Description                                | Qty. |
|----|----------------|--|------|
| 71 | 5.1110.005     | Receptacle, DC12V                          | 1    |
| 72 | 1.5783.0516.3  | Bolt M5 x 16, Green                        | 1    |
| 73 | 1.862.05       | Lock Washer Ø5,<br>Toothed                 | 2    |
| 74 | 1.97.1.05.3    | Washer, Ø5, Green                          | 1    |
| 75 | 1.6170.05.3    | Nut M5, Green                              | 2    |
| 76 | 62.01.3.2      | Control Panel                              | 1    |
| 77 | 5.1210.915     | 15Amp Circuit Breaker,<br>Push Button, CSA | 1    |
| 78 | 83.210001.00.1 | Connect Port, Black                        | 1    |
| 79 | 83.210001.00.3 | Connect Port, Red                          | 1    |
| 80 | 1.16674.0510   | Flange Bolt M5 x 10                        | 1    |
| 81 | 9.1700.008     | Plug, USB 5V/2.4A                          | 1    |

# Engine Parts Diagram



EN

## Engine Parts List

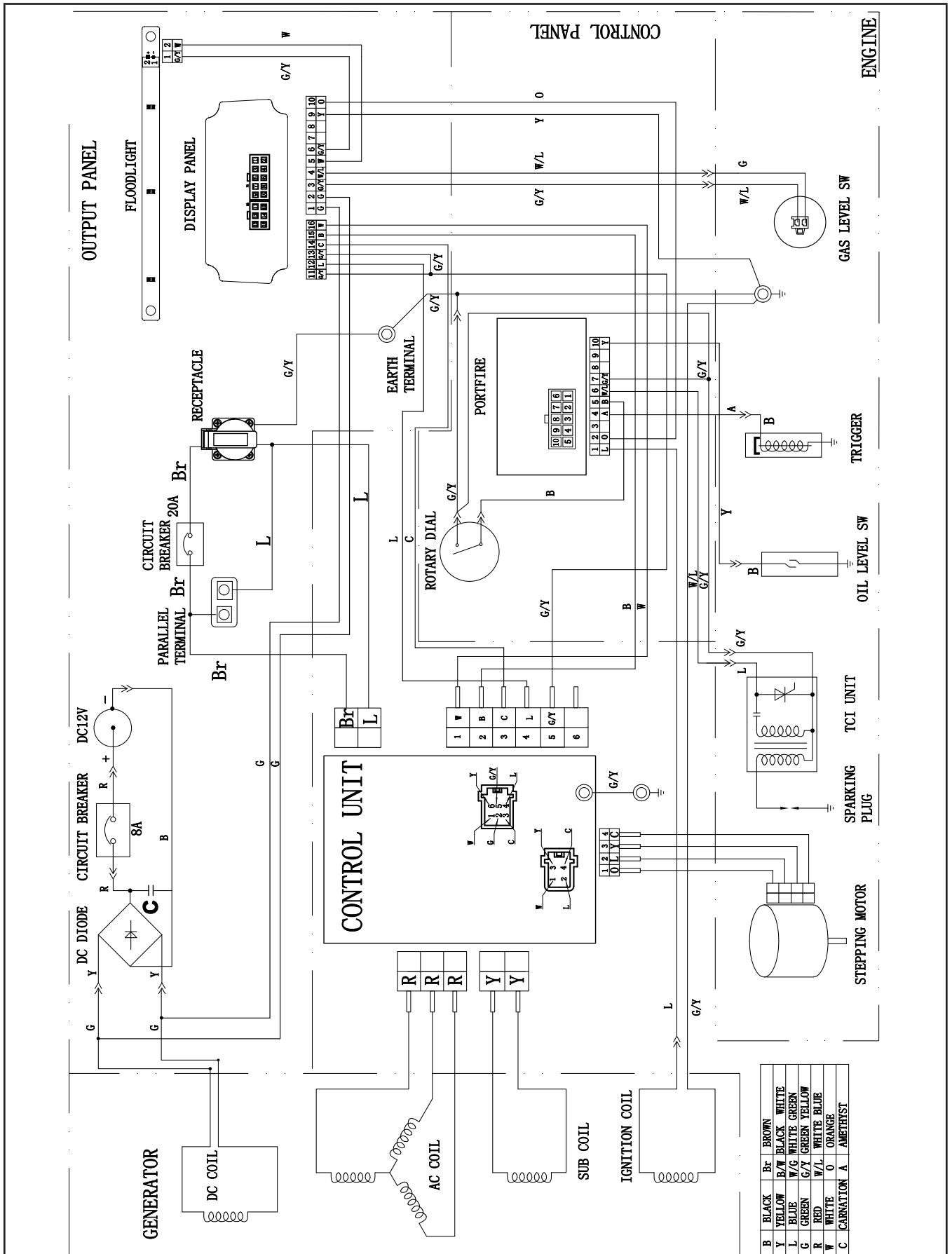
| #  | Part Number  | Description                   | Qty. |
|----|--------------|-------------------------------|------|
| 1  | 62.190006.00 | Rubber Sleeve, End Cover      | 1    |
| 2  | 1.5789.0512  | Flange Bolt M5 x 12           | 4    |
| 3  | 62.190002.01 | Cover, End Housing            | 1    |
| 4  | 1.16674.0620 | Flange Bolt M6 x 20           | 4    |
| 5  | 62.190002.00 | End Housing, Motor            | 1    |
| 6  | 1.16674.0612 | Flange Bolt M6 x 12           | 5    |
| 7  | 24.091008.01 | End Cap                       | 1    |
| 8  | 62.190001.00 | Cooling Fan, Rotor            | 1    |
| 9  | 2.02.018     | Nut M12 x 1.25                | 2    |
| 10 | 62.191100.00 | Rotor Component               | 1    |
| 11 | 1.5789.0635  | Flange Bolt M6 x 35           | 2    |
| 12 | 62.191200.04 | Stator Component              | 1    |
| 13 | 81.122000.00 | Trigger Assembly              | 1    |
| 14 | 1.5789.0620  | Flange Bolt M6 x 20           | 12   |
| 15 | 81.030007.00 | Cover, Crankcase              | 1    |
| 16 | 81.030006.00 | Plate, Coil                   | 1    |
| 17 | 1.5789.0608  | Flange Bolt M6 x 8            | 1    |
| 18 | 81.127000.00 | Oil Level Sensor              | 1    |
| 19 | 1.5789.0612  | Flange Bolt M6 x 12           | 2    |
| 20 | 81.031000.00 | Oil Dipstick Assembly         | 1    |
| 21 | 81.030035.00 | Oil Nipple                    | 1    |
| 22 | 81.030013.00 | Seal Strip 1, Crankcase Cover | 1    |
| 23 | 81.030013.01 | Seal Strip 2, Crankcase Cover | 1    |
| 24 | 81.040100.00 | Camshaft                      | 1    |
| 25 | 2.04.002     | Dowel Pin Ø8 x 14             | 4    |
| 26 | 81.030008.00 | Gasket, Crankcase Cover       | 1    |
| 27 | 2.14.013     | Woodruff Key 3 x 5 x 13       | 2    |
| 28 | 1.276.6204   | Bearing 6204                  | 2    |
| 29 | 81.050100.00 | Crankshaft                    | 1    |
| 30 | 2.11.019     | Oil Seal Ø20 x Ø35 x 5        | 2    |
| 31 | 81.030100.00 | Crankcase                     | 1    |
| 32 | 81.080001.00 | Cooling Fan                   | 1    |
| 33 | 81.060001.00 | Pulley, Starter               | 1    |
| 34 | 62.080100.00 | Fan Cover                     | 1    |
| 35 | 1.5789.0615  | Flange Bolt M6 x 15           | 8    |
| 36 | 62.061000.00 | Recoil Assembly               | 1    |
| 37 | 2.01.026     | Stud Bolt M6 x 88             | 2    |
| 38 | 81.130002.00 | Gasket, Insulator             | 1    |
| 39 | 81.130001.00 | Insulator, Carburetor         | 1    |

| #  | Part Number   | Description                     | Qty. |
|----|---------------|---------------------------------|------|
| 40 | 81.130003.00  | Gasket, Carburetor              | 1    |
| 41 | 62.130000.00  | Carburetor Assembly             | 1    |
| 42 | 81.130004.00  | Gasket, Air Cleaner             | 1    |
| 43 | 81.090004.00  | Pipe, Air Cleaner               | 1    |
| 44 | 81.090003.00  | Joint, Breather Pipe            | 1    |
| 45 | 81.090005.00  | Pressure Plate, Air Filter Tube | 1    |
| 46 | 1.6177.1.06.3 | Flange Lock Nut M6              | 6    |
| 47 | 2.02.013      | Cage Nut M6                     | 1    |
| 48 | 81.091100.00  | Base, Air Cleaner               | 1    |
| 49 | 81.091003.00  | Element, Air Cleaner            | 1    |
| 50 | 81.091200.00  | Cover, Air Cleaner              | 1    |
| 51 | 2.08.053      | Bolt M6 x 20                    | 1    |
| 52 | 81.030009.00  | Gasket, Cylinder Head           | 1    |
| 53 | 81.010100.00  | Cylinder Head                   | 1    |
| 54 | 1.5789.0650   | Flange Bolt M6 x 50             | 4    |
| 55 | 81.040013.00  | Lifter, Valve                   | 2    |
| 56 | 81.040005.00  | Push Rod                        | 2    |
| 57 | 81.040002.00  | Valve, Intake                   | 1    |
| 58 | 83.040003.01  | Spring, Valve                   | 2    |
| 59 | 81.040017.00  | Oil Seal, Valve                 | 1    |
| 60 | 83.040014.01  | Valve Collet                    | 2    |
| 61 | 81.040016.00  | Shaft, Rocker Arm               | 1    |
| 62 | 81.040012.00  | Screw, Valve Adjustment         | 2    |
| 63 | 62.020002.00  | Gasket, Cylinder Head Cover     | 1    |
| 64 | 2.01.027      | Stud Bolt M6 x 27               | 6    |
| 65 | 62.080200.00  | Air Shroud, Cylinder            | 1    |
| 66 | 62.021000.00  | Cover, Cylinder Head            | 1    |
| 67 | 2.06.010      | Clamp, Ø10.5 x Ø1               | 2    |
| 68 | 81.020001.00  | Breather Tube                   | 1    |
| 69 | 2.15.005      | Spark Plug E6RTC                | 1    |
| 70 | 2.02.009      | Nut M5 x 0.5, Lock              | 2    |
| 71 | 81.040009.00  | Rocker Arm, Intake Valve        | 2    |
| 72 | 83.040001.01  | Retainer, Valve Spring          | 2    |
| 73 | 81.040006.00  | Valve, Exhaust                  | 1    |
| 74 | 81.050200.00  | Connecting Rod Assembly         | 1    |
| 75 | 81.050005.00  | Piston                          | 1    |
| 76 | 81.050303.00  | Ring Assembly, Oil              | 1    |
| 77 | 81.050302.00  | Piston Ring, Second             | 1    |
| 78 | 81.050301.00  | Piston Ring, First              | 1    |



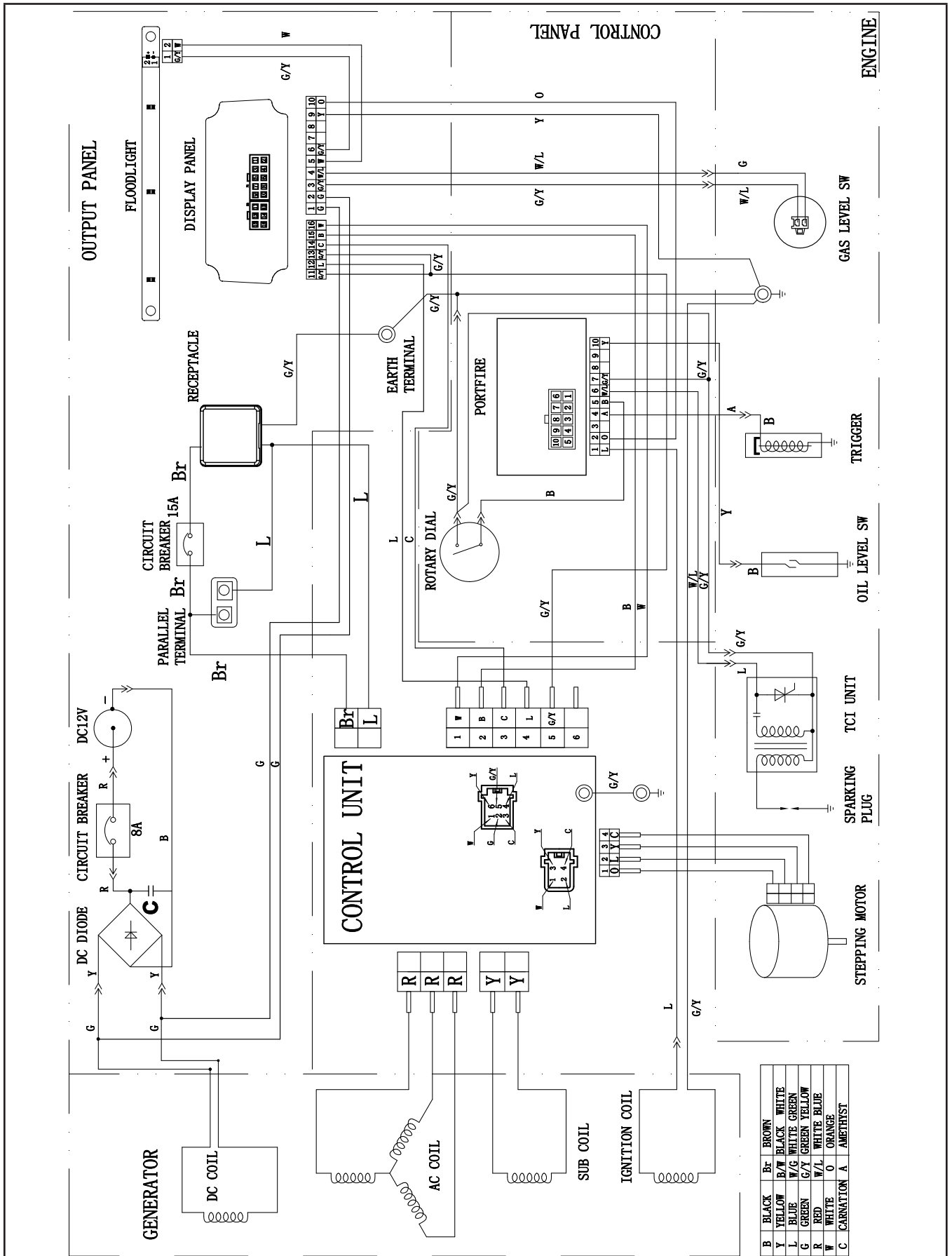
| #   | Part Number   | Description                           | Qty. |
|-----|---------------|---------------------------------------|------|
| 79  | 81.050003.00  | Wrist Pin, Piston                     | 1    |
| 80  | 2.09.007      | Circlip Ø13.5 x Ø1                    | 2    |
| 81  | 81.123000.01  | Ignition Coil                         | 1    |
| 82  | 81.080003.00  | Air Duct                              | 1    |
| 83  | 81.081001.00  | Muffler Protector Seal                | 1    |
| 84  | 62.081100.00  | End Shield, Muffler                   | 1    |
| 85  | 81.081003.00  | Fastening Insert Piece                | 1    |
| 86  | 81.100001.00  | Gasket, Exhaust Pipe                  | 1    |
| 87  | 81.081002.00  | Rubber Seal Sleeve                    | 1    |
| 88  | 62.101100.00  | Muffler Assembly                      | 1    |
| 89  | 1.6175.06.3   | Nut M6                                | 2    |
| 90  | 81.101300.00  | Spark Arrester                        | 1    |
| 91  | 2.06.011      | Clamp, Ø25 x b10                      | 1    |
| 92  | 81.101501.00  | Cap, Spark Arrester                   | 1    |
| 93  | 62.081200.00  | Middle Shield, Muffler                | 1    |
| 94  | 1.70.0616     | Inside Hexagonal Bolt<br>M6 x 16      | 1    |
| 95  | 1.845.4817    | Tapping Screw<br>ST4.8 x 17           | 4    |
| 96  | 62.081300.00  | Terminal Shield,<br>Muffler           | 1    |
| 97  | 1.818.0306.1  | Screw M3 x 6                          | 2    |
| 98  | 62.132200.00  | Stepper Motor                         | 1    |
| 99  | 1.9074.1.0408 | Screw M4 x 8                          | 2    |
| 100 | 81.132100.00  | Stepper Motor Base                    | 1    |
| 101 | 1.9074.4.0535 | Screw M5 x 35                         | 2    |
| 102 | 62.130005.00  | Support,<br>Stepper Motor             | 1    |
| 103 | 81.130010.00  | Spring, Connector                     | 1    |
| 104 | 81.130008.00  | Connector,<br>Choke Valve Axis        | 1    |
| 105 | 81.131000.00  | Carburetor                            | 1    |
| 106 | 1.9074.3.0510 | Screw M5 x 10                         | 1    |
| 107 | 62.130007.00  | Pressure Plate,<br>Choke Control Line | 1    |
| 108 | 81.130006.00  | Brace, Support Plate                  | 2    |

82001i-EU Wiring Diagram



|   |           |     |              |
|---|-----------|-----|--------------|
| B | BLACK     | Br  | BROWN        |
| Y | YELLOW    | B/W | BLACK WHITE  |
| L | BLUE      | W/G | WHITE GREEN  |
| G | GREEN     | G/Y | GREEN YELLOW |
| R | RED       | W/L | WHITE BLUE   |
| W | WHITE     | O   | ORANGE       |
| C | CARNATION | A   | AMETHYST     |

82001i-UK Wiring Diagram



|   |           |     |              |
|---|-----------|-----|--------------|
| B | BLACK     | Br  | BROWN        |
| Y | YELLOW    | B/W | BLACK WHITE  |
| L | BLUE      | W/G | WHITE GREEN  |
| G | GREEN     | G/Y | GREEN YELLOW |
| R | RED       | W/L | WHITE BLUE   |
| W | WHITE     | O   | ORANGE       |
| C | CARNATION | A   | AMETHYST     |