

ARCOTEL

NETWORK MANAGEMENT SYSTEM

EOC-M350-MS

 Installation manual

ARCOTEL NETWORK MANAGEMENT SYSTEM EOC-M350-MS

1. System abstract

EOC-M350-MS management system is accord with the SARFT EOC network management system, it uses java EE technology, it has many advantages, including convenient to use, easy to govern, advanced technology. The network management system is provided with the independent intellectual property rights.

2. Installation requirements

The network management system support Linux system, Windows system.

When install the system there must has EOCNMS.RAR;

Dotnetfx.exe, Firefox-full-latest.exe can be installed as a doctor.

3. Installation process

Double click EOCNMS.RAR, Then enter into the interface like figure 2, here choose Extract To button, as the following figure



Figure 1

Then enter into the following interface,

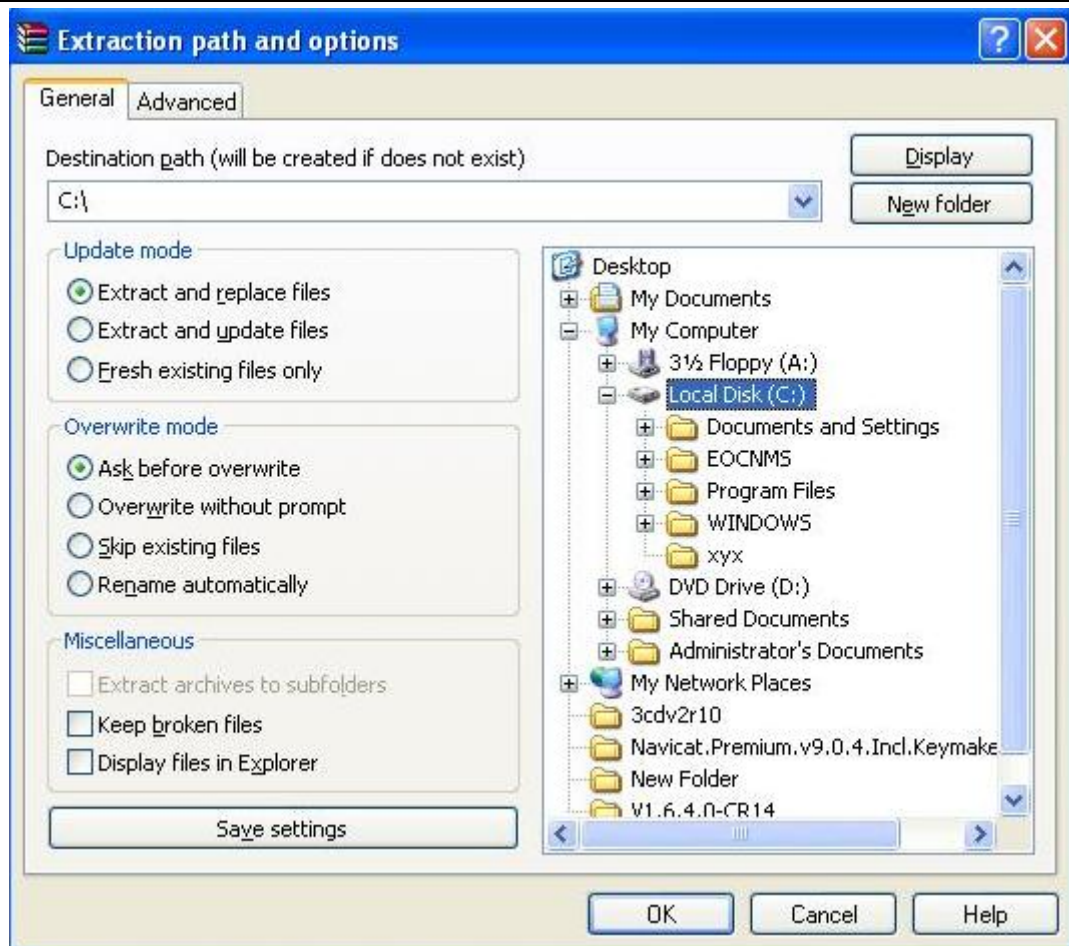


Figure 2

Here choose the path of the file that the run.exe in, if done the selection, click OK button, then just wait

If already complete decompression, enter into the path to check the file, like the figure3:

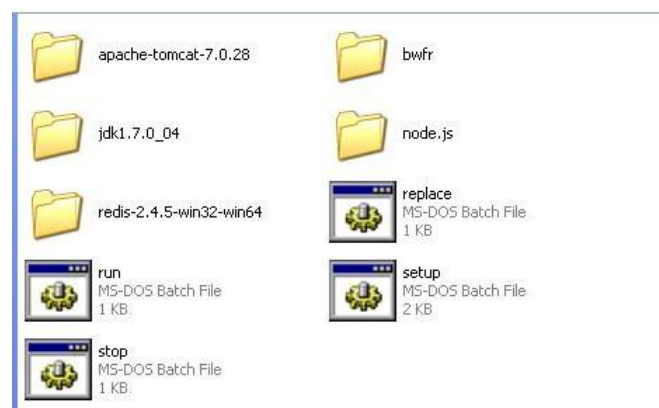
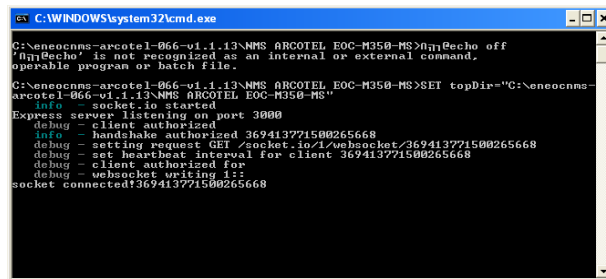


Figure 3

1. Install NMS double click setup, just click it at the first time to use the NMS

2. Start NMS double click run, click it at the every time when using the NMS

3. Log in NMS



```
C:\WINDOWS\system32\cmd.exe
C:\Neneocms-arcotel-066-v1.1.13\NMS ARCOTEL EOC-M350-MS>0nEcho off
'0nEcho' is not recognized as an internal or external command,
operable program or batch file.
C:\Neneocms-arcotel-066-v1.1.13\NMS ARCOTEL EOC-M350-MS>SET topDir="C:\Neneocms-arcotel-066-v1.1.13\NMS ARCOTEL EOC-M350-MS"
info - socket.io started
Express server listening on port 3000
debug - client authorized
info - handshake authorized 369413771500265668
debug - setting request GET /socket.io/1/shsocket/369413771500265668
debug - set heartbeat interval for client 369413771500265668
debug - client authorized for
debug - websocket writing 1::
socket connected!369413771500265668
```

Figure 4

If the file like the figure 4 shows, that shows completed installation.

4. Attention

If the NMS runs on the windows XP system, the NMS will not run regularly without installing dotnetfx.exe, so it must set up the dotnetfx.exe.

Clicking dotnetfx.exe, appears the interface like figure 5

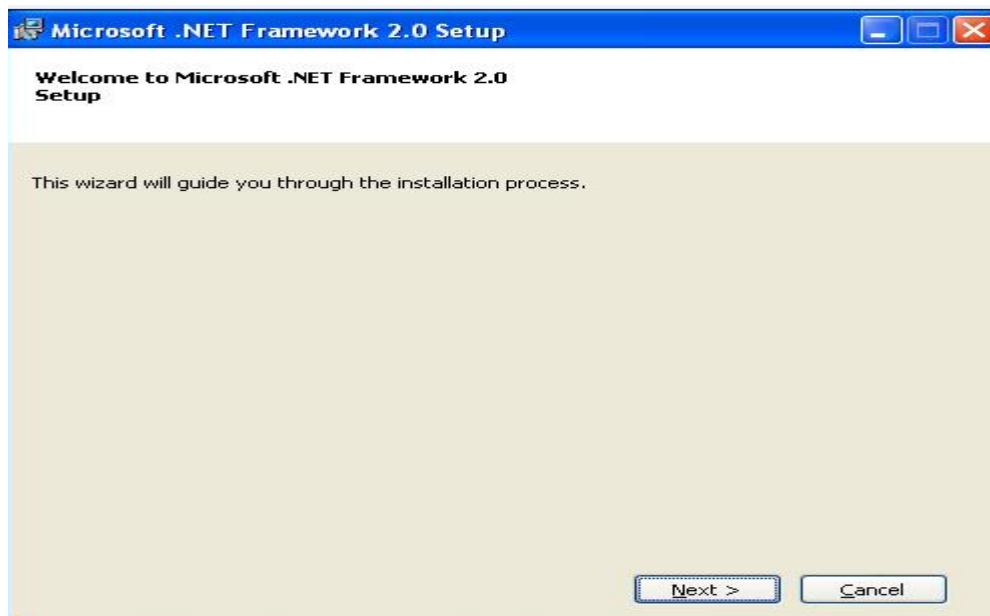


Figure 5

Clicking Next

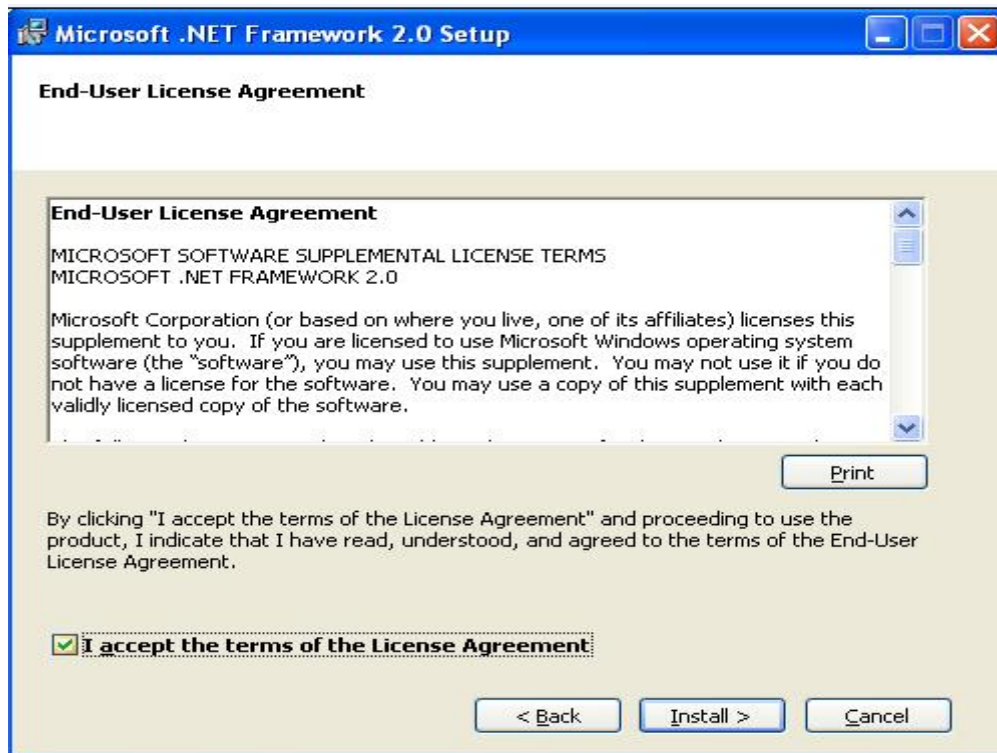


Figure 6

Selecting I accept the terms of the License Agreement, then click Install.

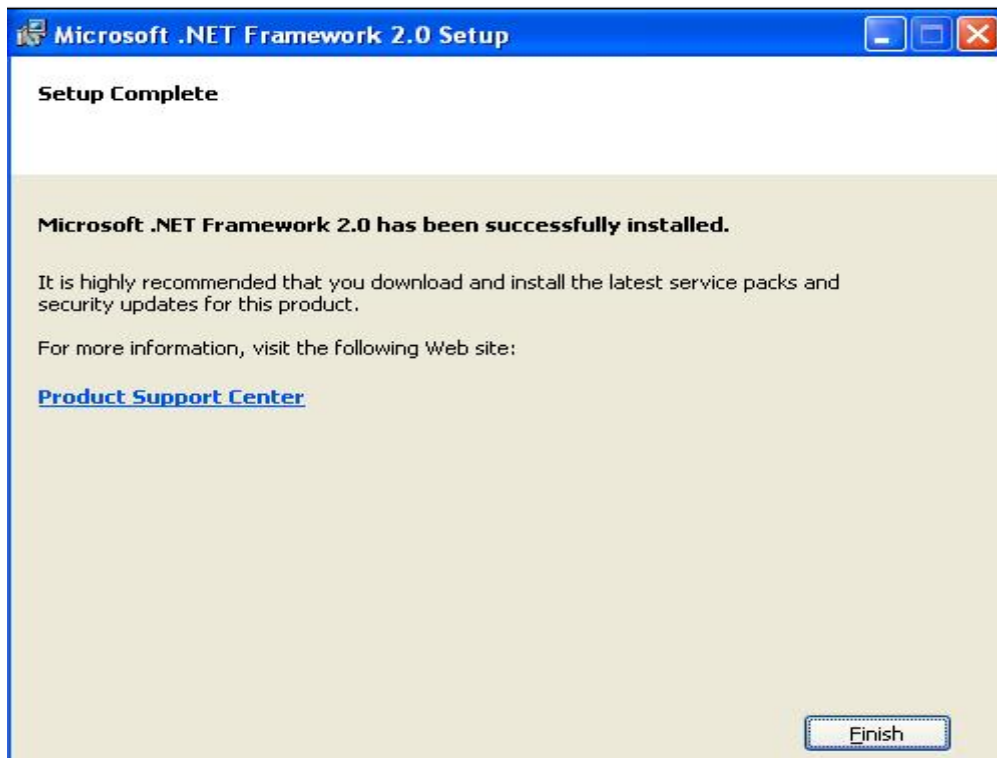


Figure 7

Clicking Finish button, so the dotnetfx.exe is installed.

5. Login page

When use the NMS for the first time, please click setup first, the click run, if done this, then log in <http://localhost:3000>